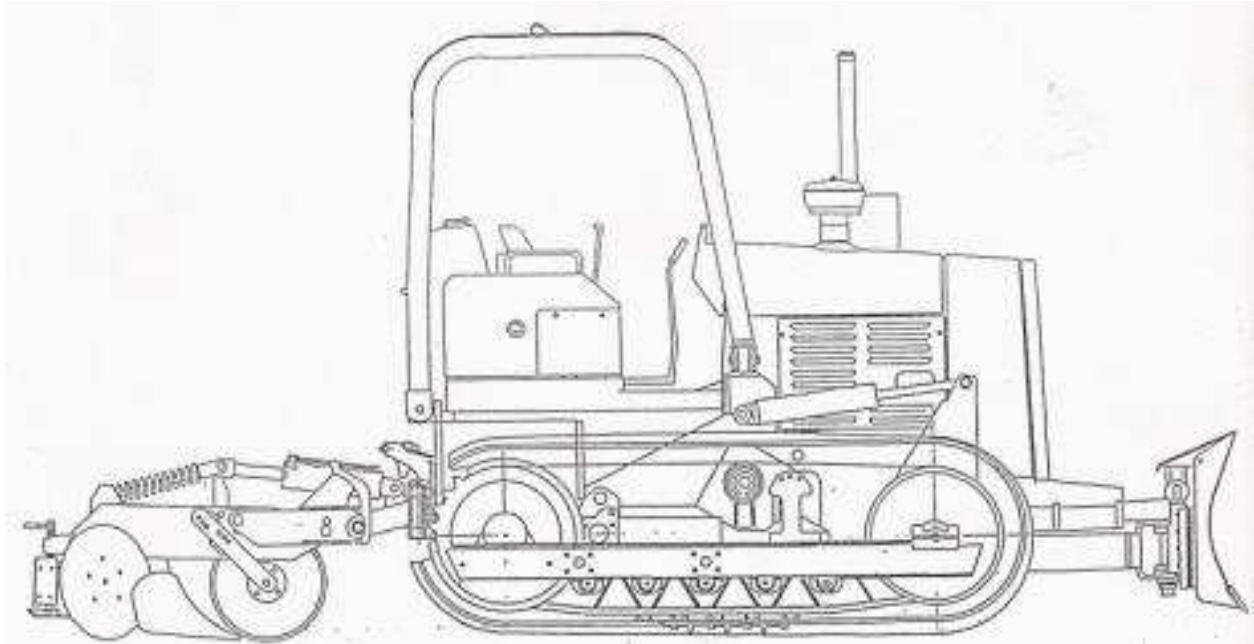


# FESCO SIECO FIRELINE PLOW RM500



**FESCO**

A DIVISION OF

**MATHIS PLOW CO.**

**P.O. BOX. 1277**

**STARKVILLE, MS 39760**

**662.323.5600**

## **Warranty**

**FESCO WARRANTS ITS PRODUCTS TO BE FREE FROM DEFECTS IN MATERIAL AND WORKMANSHIP FOR A PERIOD OF (6) SIX MONTHS FROM DATE OF FIRST USE BY THE ORIGINAL PURCHASER AT RETAIL, UNDER NORMAL USE AND SERVICE.**

**DEFECTIV PARTS MUST BE RETURNED TO FESCO AT OWNER'S EXPENSE FOR INSPECITION. THE OBLIGATION OF FESCO UNDER THIS WARRANTY SHALL BE LIMITED TO SHIPPING, THE ORIGINAL PURCHASER AT RETAIL, OF THE PART OR PARTS OF SUCH "FESCO". EQUIPMENT INTENDED TO REPLACE THE PART OR PARTS ACKNOWLEDGED BY FESCO TO BE DEFECTIVE IN MATERIAL ORWORKMANSHIP, AND DOES NOT INCLUDE ANY INSTALLATION OR TRANSPORTATION COST. NO WARRANTY IS MADE WITH RESPECT TO ITEMS MADE BY OTHERS, SINCE THEIR RESPECTIVE MAKERS WARRANT SUCH ITTEMS.**

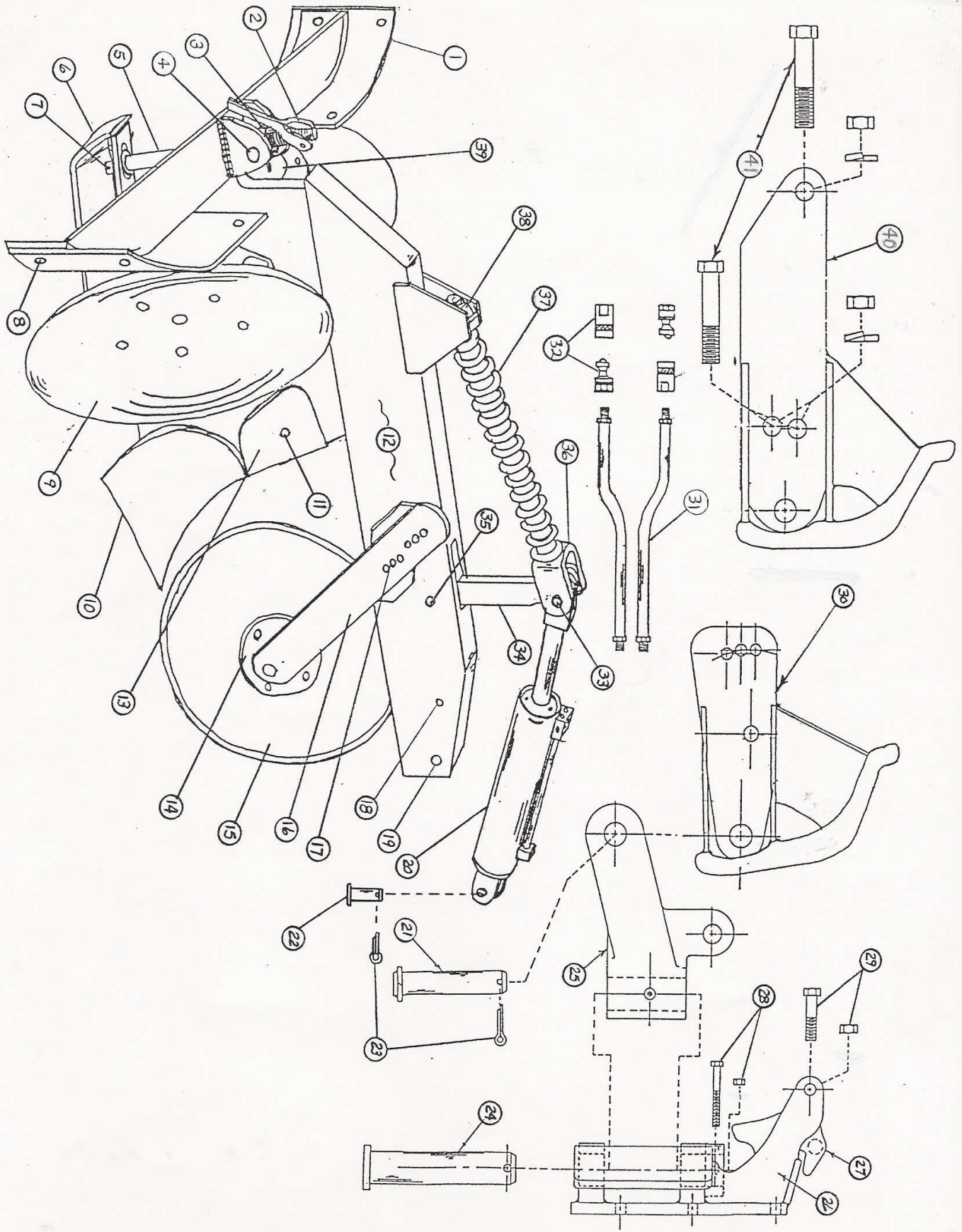
**NO LIABILITY IS ASSUMED FOR THE FOR EXPENSES OR DAMAGES RESULTING FROM MALFUNCTIN OR INTERRUPTION IN OPERATION OF EQUIPMENT**

**THIS WARRENTY IS IN LIEU OF ALL OTHER WARRENTIRES, EXPRESSED OR IMPLIED, AND OF ALL OBLIGATIONS OR LIABILITIES ON THE PART OF FESCO, AND IT NEITHER ASSUMES NOR AUTHORIZES ANY PERSONS TO ASSUME FOR IT ANY OTHER OBLIGATION OR LIABILITY IN CONNECTION WITH WORKMANSHIP OR MATERIAL OF EQUIPMENT BEARING ITS TRADEMARKS, OR ANY PART THEREOF.**

**THIS WARRANTY SHALL NOT APPLY TO ANY "FESCO" EQUIPMENT OR ANY PART THERE OF, WHICH HAS BEEN DAMAGED IN ANY ACIDENT, OR BY FIRE, FLOOD, ACT OF GOD, ABUSED OR MISUSED, OR WHICH HAS BEEN ALTERED ELSEWHERE THAN AT THE PLACE OF MANUFACTURE, OR IN WHICH THE ORIGINAL PURCHASER THEREOF AT RETAIL, HAS USED OR BEEN ALLOWED TO BE USED,PARTS NOT MADE OR SUPPLIED BY FESCO.**

**FESCO RESERVES THE RIGHT AT ANY TIME TO MAKE CHANGES IN THE DESIGN, MATERIALS, AND/OR SPECIFICATIONS OF EQUIPMENT BEARING ITS TRADEMARK, AND/OR ACCESSORIES THEREOF, WITHOUT THEREBY BECOMING LIABLE TO MAKE SIMILAR CHANGES IN EQUIPMENT BEARING ITS TRADEMARK, AND/OR ACCESSORIES THEREOF,PREVIOUSLY MANUFACTURED.**

**FESCO  
DIVISION OF MATHIS PLOW COMPANY  
P. O. BOX 1277  
STARKVILLE, MS 39760  
662.323.5600  
fesco2@bellsouth.net**



# RM-500 PARTS BOOK

F

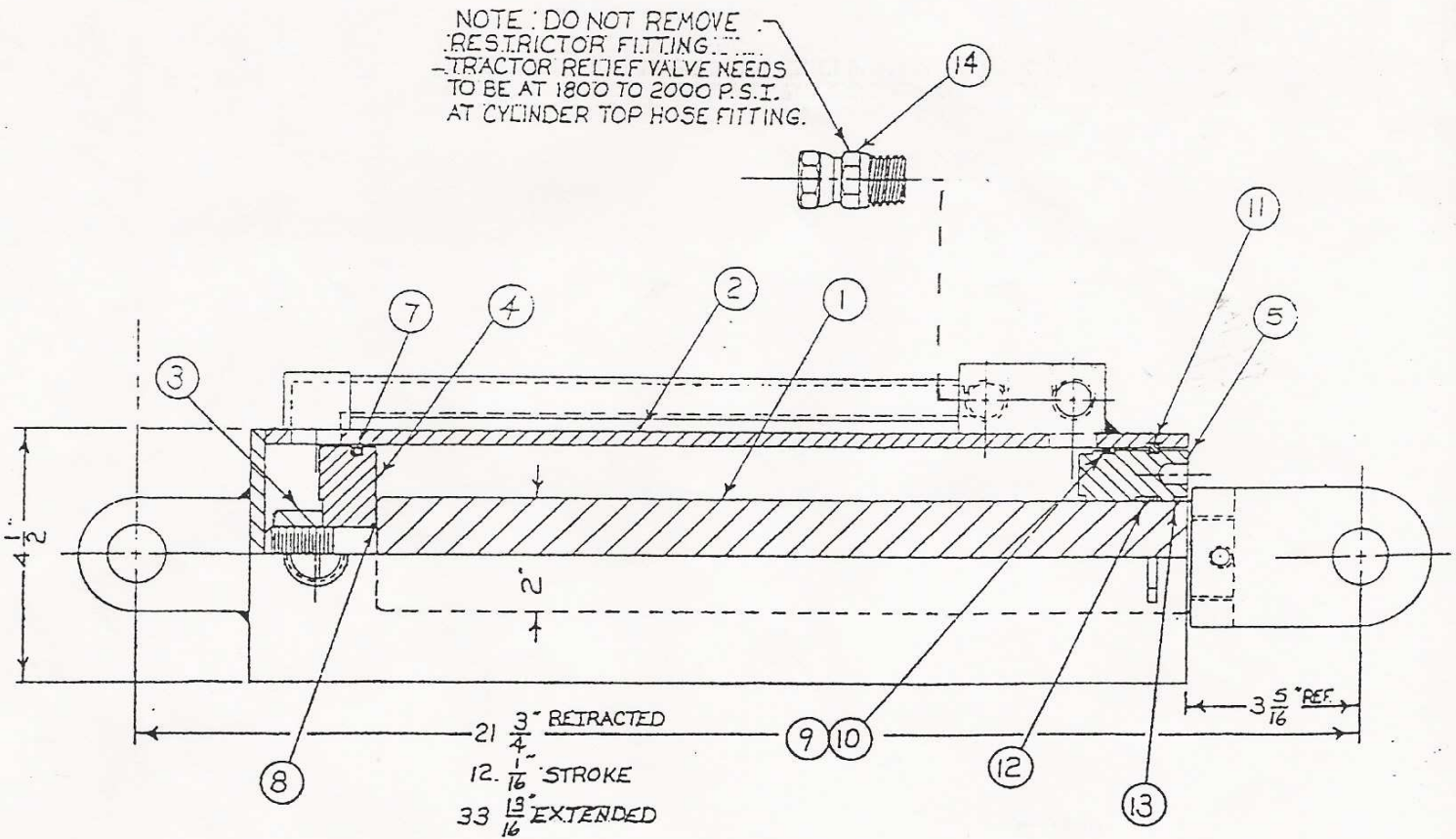
ITEM #	PART #	DESCRIPTION	QTY. REQUIRED
1	M100503	WING	2
2	H501101	HANDLE	1
2	CK038300	COTTER KEY	1
3	H501002	PIVOT NUT	1
4	NC100150	BOLT	2
4	LW100	LOCK WASHER	2
5	H501000	DEPTH SCREW	1
6	H500900	DEPTH SLIDE	1
6	NC062450	BOLT	1
6	LN062	LOCK NUT	1
7	FW100	FLAT WASHER	2
7	CK025300	COTTER KEY	1
8	CB062200	CARRIAGE BOLT	4
8	NC062	NUT	4
8	LW062	LOCK WASHER	4
9	M101520	20" DISC	2
9	PB044150	PLOW BOLT	10
9	LW044	LOCKWASHER	10
9	NC044	NUT	10
10	M101811	MIDDLEBUSTER	1
10	NC075375	BOLT	2
10	LW075	LOCKWASHER	2
10	NC075	NUT	2
11	CB050150	CARRIAGE BOLT	2
11	FW050	FLAT WASHER	2
11	LW050	LOCK WASHER	2
11	NC050	NUT	2

# RM-500 PARTS BOOK

ITEM #	PART #	DESCRIPTION	QTY. REQUIRED
12	RM-500H FR.	PLOW FRAME	1
13	M101813	DIRT GUARD	1
14	M101302-A	COULTER ASSEMBLY	1
15	M101415	COULTER BLADE	1
16	M100600	COULTER ARM	2
17	NC075650	BOLT	2
17	LW075	LOCK WASHER	2
17	NC075	NUT	2
18	NC075550	BOLT	1
18	NC075	NUT	1
18	LW075	LOCK WASHER	1
19	NC100550	BOLT	1
19	NC100	NUT	1
19	LW100	LOCK WASHER	1
20	AB9H	HYDRAULIC CYLINDER	1
21	H501208H	HITCH SWIVEL PIN	1
22	S501803H	FRONT CYLINDER PIN	1
23	CK038300	COTTER KEY	2
24	H500500-12	TRACTOR HITCH PIN	1
25	S02H	SWIVEL	1
26	S886	TRACTOR HITCH	1
27	S886-LA	LATCH ASSEMBLY	1
28	NC062450	BOLT	1
28	LN062	LOCK NUT	1
29	NC075375	BOLT	2
29	LN075	LOCK NUT	2
30	M101190	HITCHALIZER	1

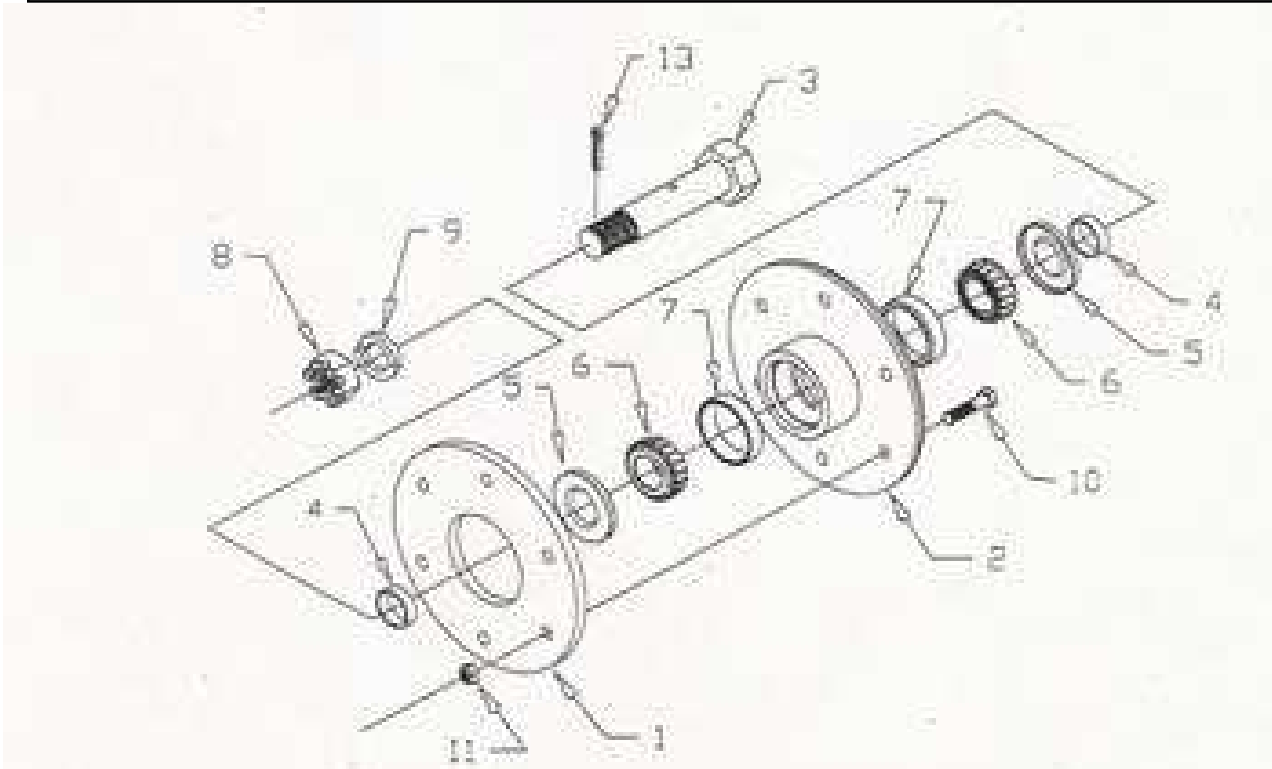
# AB9-H HYDRAULIC CYLINDER PARTS BOOK

ITEM #	PART #	DESCRIPTION	QTY. REQUIRED
1	AB9H-R	PISTON ROD	1
2	AB9H-BTA	BUTT & TUBE ASSEMBLY	1
3	AB9H-N	LOCKNUT	1
4	AB9H-P	PISTON	1
5	AB9H-G	GLAND	1
7-13	PMCK-AB90	PACKING REPAIR KIT	1
14	S501-8-8R	RESTRICTOR FITTING	1



021902

# M101302A COULTER ASSEMBLY



ITEM #	PART #	DESCRIPTION	QTY REQUIRED
1	M101301	FLANGE	1
2	M101302	COULTER HUB	1
3	M101401	AXLE	1
4	M101402	SPACER	2
5	M101407	SEAL (13892)	2
6	M101408	BEARING (2687)	2
7	M101409	RACE (2631)	2
8	NC100	SLOTTED NUT	1
9	LW100	LOCKWASHER	1
10	NC050200	BOLT	1
10	LN050	LOCKNUT	1

# S501501/601

## DISC BOX ASSEMBLY

ITEM #	PART #	DESCRIPTION	QUANTITY
1	S501501	R/H DISC BOX	1
1	S501601	L/H DISC BOY	1
2	S501503	DISC BOX CAP	1
3	S501504	FELT SALT	1
4	S501505	METAL SEAL	1
5	S501506	DISC SPINDLE	1
6	S501507	NUT	1
7	S501508	WASHER	1
8	S501510	BEARING (33262)	1
9	S501511	BEARING (46162)	1
10	S501112	RACE (43462)	1
11	S501513	RACE (46368)	1
12	CKO25300	Cotter key	1
13	BF312	Grease fitting	1

